

# NASSAU COMMUNITY COLLEGE FOUNDATION

Wednesday, April 10, 2019 | 7 p.m.–11 p.m.  
Cradle of Aviation Museum, Garden City NY

# Gala

## HONORING



*John Durso*

President,  
Long Island Federation of Labor,  
Local 338 RWDSU/UFCW



*Frank Frisenda*

President,  
Nassau Community College  
Federation of Teachers (NCCFT)  
Local 3150



*Steven Mendelsohn, M.D.*

Chief Executive Officer,  
Zwanger-Pesiri Radiology



*Gloria Robles*

President,  
Board of Directors,  
Dream Foundation

## WITH CELEBRITY HOST

**Carol Silva**

*Emmy Award Winning Anchor  
Morning and Midday Edition at News 12 Long Island*



# NASSAU COMMUNITY COLLEGE FOUNDATION

*Gala*

Evening ♦ Cradle of Aviation ♦ One Davis Avenue Garden City, NY 11530

Cocktail Hour ..... 7:00 p.m.

Evening Program ..... 8:00 p.m.

## HONORING

*John Durso*

President,  
Long Island Federation of Labor,  
Local 338 RWDSU/UFCW

*Frank Frisenda*

President,  
Nassau Community College  
Federation of Teachers (NCCFT)  
Local 3150

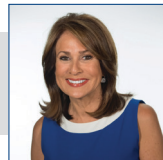
*Steven Mendelsohn, M.D.*

Chief Executive Officer,  
Zwanger-Pesiri Radiology

*Gloria Robles*

President,  
Board of Directors,  
Dream Foundation

## CELEBRITY HOST



### Carol Silva

Emmy Award Winning Anchor  
Morning and Midday Edition at News 12 Long Island

# SPONSORSHIP OPPORTUNITIES

## Presenting Sponsor – \$25,000

- 3 Tables of 10
- Signage and Logo Link on Website
- Front Inside Cover Welcome Letter
- Speaking at Event Opening

## Platinum Sponsor – \$15,000

- 2 Tables of 10
- Signage and Logo Link on website
- Ad on back inside cover of Journal

## Gold Sponsor – \$10,000

- Table of 10
- Gold Ad in Journal
- Signage and Logo Link on Website

## Silver Sponsor – \$7,500

- Table of 10
- Silver Ad in Journal
- Signage and Logo on Website

## Bronze Sponsor – \$5,000

- Table of 10
- Bronze Ad in Journal
- Signage and Logo on Website

## VIP Table Sponsor – \$2,500

- Table of 10
- Full Page Ad in Journal

## Patron Sponsor – \$1,300

- 4 Tickets
- ½ Page Ad in Journal

## Friend Sponsor – \$600

- 2 Tickets
- ¼ Page Ad in Journal

## Dinner (Per Person) – \$250

- 1 Ticket for Evening

## JOURNAL ADVERTISING OPPORTUNITIES

AD SIZE	DIMENSIONS	COST
Platinum	8 ½" x 11"	\$1000
Gold	8 ½" x 11"	\$800
Full Page	8 ½" x 11"	\$600
Half Page	4 ½" x 5 ½"	\$400
Quarter Page	2 ¼" x 3 ¾"	\$200

### Contact Us:

Telephone: 516.572.0670

Visit: [ncc.edu/gala](http://ncc.edu/gala)

E-Mail: [foundationevents@ncc.edu](mailto:foundationevents@ncc.edu)

## **Nassau Community College President**

---

Dr. W. Hubert Keen

## **Nassau Community College Board of Trustees**

---

Jorge L. Gardyn, MD, FACP, Chair  
John A. DeGrace  
John R. Durso  
Alex Figueroa

Linda H. Green  
Wanda Jackson  
Edward W. Powers  
George Siberon

Donna M. Tumam, EdD  
Kathy Weiss, PhD, Vice Chair

## **Nassau Community College Foundation Board**

---

Michael G. McGinty, Chairman of the Board  
Victoria Kleinschmidt, Vice Chair  
Nicholas Terzulli, Esq. Treasurer  
Azad K. Anand, MD  
Thomas Cavallaro, CPA  
Joy DeDonato

Ingrid Dodd  
John R. Durso  
Beverly Fortune  
Dr. Ann Weber-Hughes  
Richard Kessel  
Joseph M. Lawless

Joseph S. Moscola MBA, PA  
Paul A. Schmidt  
Ray Tejada  
Ben Torres  
NCC Faculty Representative  
(OPEN POSITION)

## **Nassau Community College Foundation Staff**

---

Joy DeDonato, Executive Director  
Rudy Breedy, Director of Development

Colleen O'Hara, Scholarship Coordinator  
Caitlyn Sanchez, Sillcox Scholarship Coordinator

## **Nassau Community College Foundation Mission:**

The purpose of the Foundation as outlined in its Certificate of Incorporation is to receive, hold, invest, and administer gifts and donations for Nassau Community College as well as its students and faculty. Our responsibilities include, but are not limited to fundraising and the distribution of those funds in support of student scholarship opportunities as well as growing our academic programs. The Foundation also supports faculty development as well as a variety of the College's cultural and leadership activities.

## **For more information please contact:**

Nassau Community College Foundation ♦ 364 Rice Circle, Garden City, NY 11530-6793  
516.572.0670 ♦ [foundationevents@ncc.edu](mailto:foundationevents@ncc.edu) ♦ [ncc.edu/gala](http://ncc.edu/gala)

